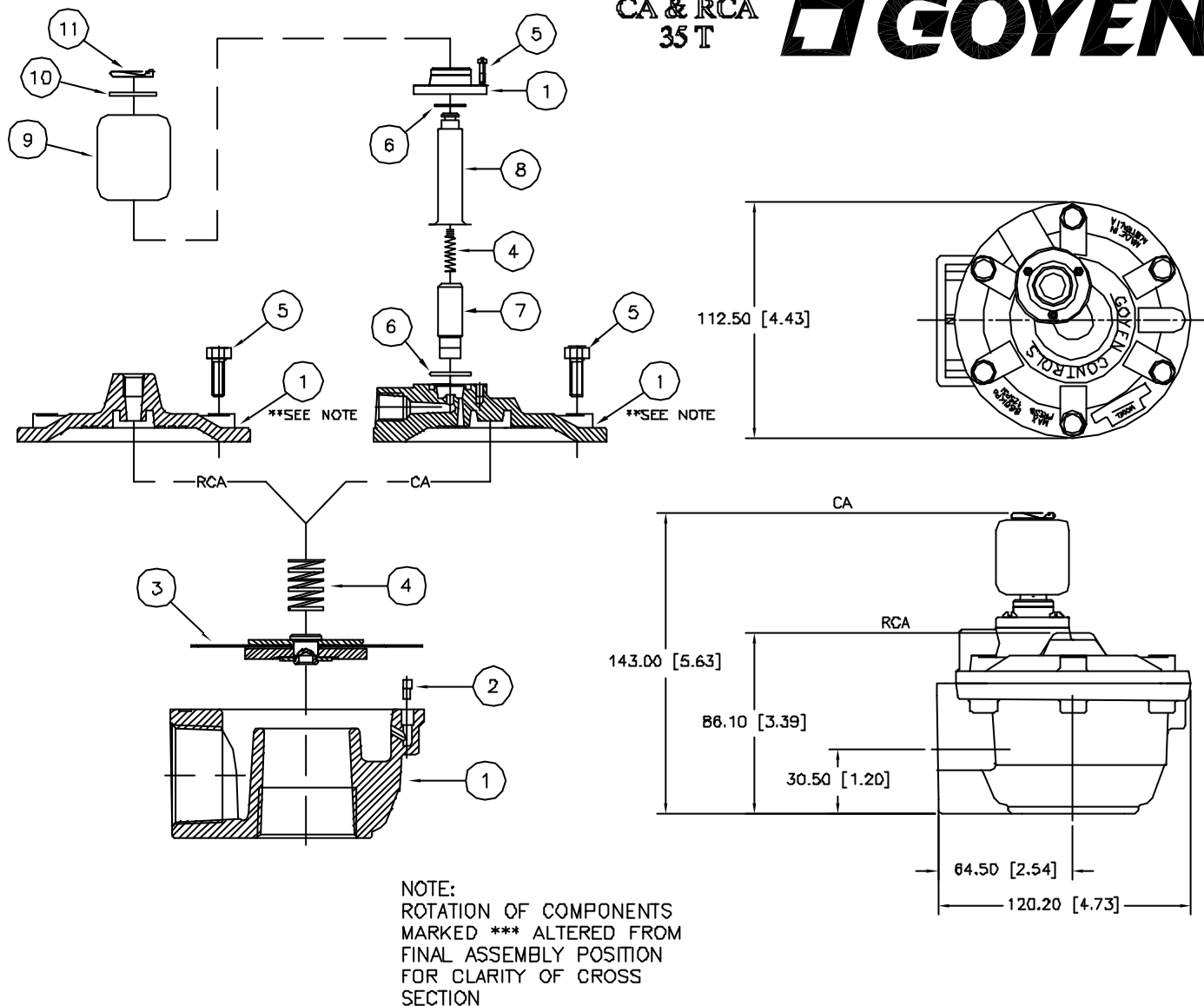


CA & RCA  
35 T**GOYEN**

NOTE:  
ROTATION OF COMPONENTS  
MARKED \*\*\* ALTERED FROM  
FINAL ASSEMBLY POSITION  
FOR CLARITY OF CROSS  
SECTION

**MECHANICAL DETAILS**

No	DESCRIPTION	STANDARD MATERIAL	PORT OPTIONS	HI TEMP MATERIALS	KIT No STANDARD	KIT No HI TEMP
1	BODY & COVER	ALUMINIUM DIE CAST CA313	1 1/2" RC,NPT,G	AS STANDARD	-	-
2	BLEED PIN	TURNED ALUMINIUM	N/A	AS STANDARD	-	-
3	MAIN DIAPHRAGM	BUNA N / BUNA N RUBBER	N/A	VITON	K3500	K3501
4	MAIN SPRING	304 STAINLESS STEEL	N/A	AS STANDARD	-	-
5	SCREWS	304 STAINLESS STEEL	N/A	AS STANDARD	-	-
6	O' RINGS	BUNA N / NITRILE	N/A	VITON	-	-
7	PLUNGER ASS'Y	430 FR STAINLESS STEEL	N/A	AS STANDARD	K0380	-
8	FERRULE/IRON TOP ASS'Y	305 STAINLESS STEEL	N/A	AS STANDARD	K0380	-
9	COIL ARRGMNT.	130° RATED NYLON ENCAPSULATION	QD - 1/2 NPSC - M20x1.5	N/A	QR-K030-K0309 QD(M)-K0310-K0319 QD(N)-K0320-K0329	N/A
10	WASHER	PRESSED ALUMINIUM	N/A	AS STANDARD	-	-
11	CLIP	MECHANICAL PLATED STEEL	N/A	AS STANDARD	-	-

**ELECTRICAL DETAILS**

COIL VOLTAGE	200/240 VAC, 100/120 VAC, 24 VAC, 24 VDC, 12 VDC
COIL CONNECTION	QR - DIN CONNECTION QD CONDUIT ENTRY

**WEIGHTS**

UNIT WEIGHT	RCA - 0.830 Kg	CA - 1.036 Kg
-------------	----------------	---------------

DOC No	CAS_DG_35T
REVISION No	2
ISSUE DATE	17.7.2002